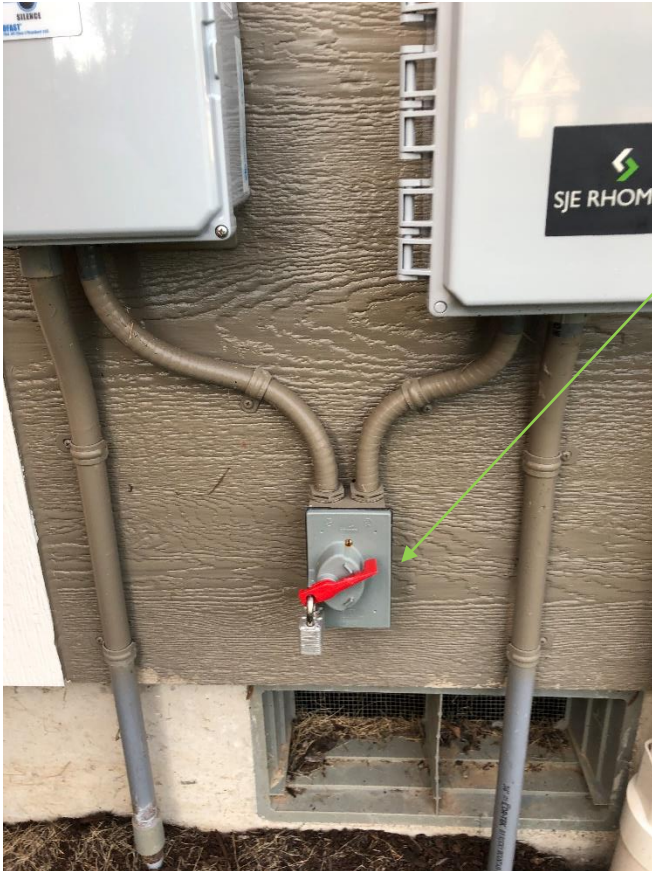


Septic System Boxes and Functions – Basics

(as instructed by Randy with R & J Trends November 2020 - use of these instructions is at your own discretion and risk)

Two Boxes and a Switch from top left to right to bottom:

The **Blower box**, the **Septic Flush/Alarm box**, and the **Main Power Switch**.



The RED LEVER is the MAIN power switch to both the Septic Flush Alarm box and the Blower Box. The lever should be as show in the ON position.

These MAIN switches are not marked ON/OFF unfortunately, but there is a hole to put a padlock on the lever so it stays in the “ON” position. If someone needs to work on the system, the padlock can be removed and the lever can be switched to “OFF” but it usually stays “ON”. R&J Trends recommends keeping a lock on this so the system is not inadvertently turned off.

The RED LEVER is **not** turned to off to manually flush the system or to check an alarm.

The **EXTERIOR Flush/Alarm box – front view:**



This is what the front of the Septic Flush/Alarm box looks like

The Septic Flush/Alarm Box – Side View

When the septic system flushing water through the system falls behind in its cycle, this may cause the alarm to start along with a flashing red light.



IN CASE ALARM BUZZER STARTS BLARING, do the following:

1) Pull the SIDE Black Alarm Lever forward to silence the alarm.

(The normal setting for this switch is the middle. If you push this lever back past the middle, it is to TEST the alarm.)

2) Alarm should stop blaring noise, but the RED LIGHT on top of the box will still be flashing.

Continued on next page.

The EXTERIOR Flush/Alarm box – front view:

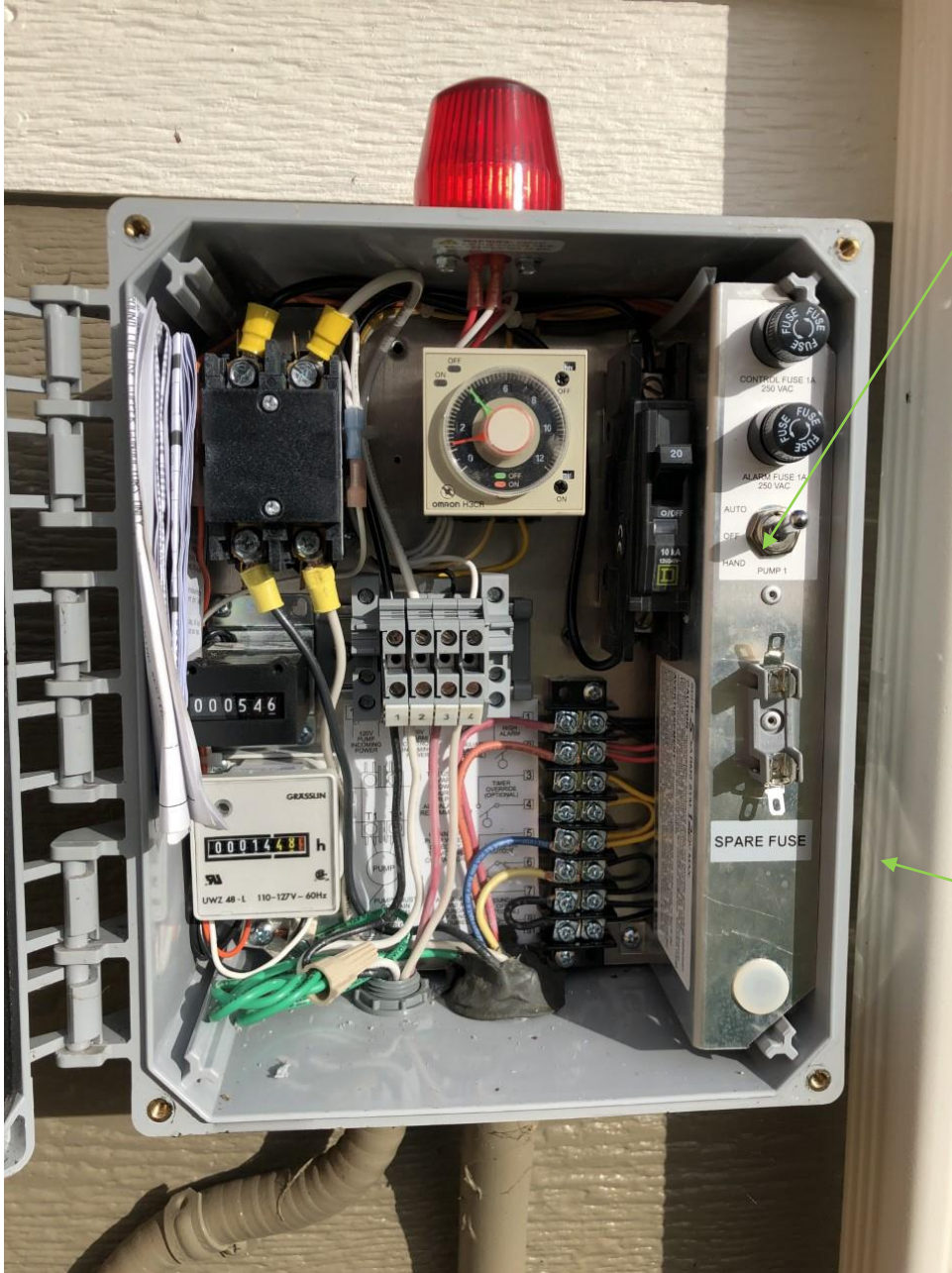


3) Use a screwdriver to open the Flush/Alarm box at corners.

4) Open the box.

Continued on next page.

The INTERIOR Flush/Alarm box – front view:



- 5) Push Pump Switch **down** to “HAND” pump setting. This allows the system to pump water to the reserve drain field.
(Switch has three settings:
 - a. Auto (normal setting)
 - b. Off
 - c. Hand)
 - 6) Allow system to “HAND” pump water for **2 to 4 minutes** or until the RED LIGHT stops flashing.
 - 7) Once Red Light has stopped flashing, flip Pump Switch **up** back to “AUTO” pump – which puts the system back on it’s normal timed pumping program.
 - 8) Close the Box and replace the screws in the corners.
 - 9) Don’t forget to push the SIDE box Black Alarm Lever **BACK** to it’s middle, normal setting on the outside SIDE (reverse of step 1).
- If Alarm keeps going back on, try these steps again. If Alarm **STILL** keeps going back on, call a Septic Specialist ASAP.

DISCLAIMER: Keanland Park HOA PRRD Homeowners Association (“KP HOA”) and its Board members (“KP HOA Board”) gives no warranty and accepts no responsibility or liability for the accuracy or the completeness of the information and materials contained in these pages or on this website. Under no circumstances will KP HOA or KP HOA Board be held responsible or liable in any way for any claims, damages, losses, expenses, costs or liabilities whatsoever (including, without limitation, any direct or indirect damages for loss of funds, home or property usage interruption, or loss of use) resulting or arising directly or indirectly from your use of or inability to use this website, web page or any websites linked to it, or from your reliance on the information and material on this website, even if the KP HOA or KP HOA Board has been advised of the possibility of such damages in advance.

CLEANING THE BLOWER AIR FILTER

The Blower Box.

This box is used to shut off power before cleaning the Blower Air Filter. The Blower Air Filter is located under one of the green round lids in your yard.



TO CHECK/Clean the Blower Air Filter:

- 1) Flip the BLOWER CIRCUIT BREAKER to "OFF".
- 2) Alarm will sound when BREAKER has been turned off so press the "SILENCE" button to turn off the Alarm.
- 3) When you have completed checking/cleaning your Blower Air Filter, be sure to flip the BLOWER CIRCUIT BREAKER back to "ON".

DISCLAIMER: Keanland Park HOA PRRD Homeowners Association ("KP HOA") and its Board members ("KP HOA Board") gives no warranty and accepts no responsibility or liability for the accuracy or the completeness of the information and materials contained in these pages or on this website. Under no circumstances will KP HOA or KP HOA Board be held responsible or liable in any way for any claims, damages, losses, expenses, costs or liabilities whatsoever (including, without limitation, any direct or indirect damages for loss of funds, home or property usage interruption, or loss of use) resulting or arising directly or indirectly from your use of or inability to use this website, web page or any websites linked to it, or from your reliance on the information and material on this website, even if the KP HOA or KP HOA Board has been advised of the possibility of such damages in advance.